

The Porthole

Nov. 2019



United States Power Squadrons
Come for the Boating Education...Stay for the friends

Ann Arbor Sail and Power Squadron
A unit of United States Power Squadrons in District 9

<http://www.aaspsq.org/>

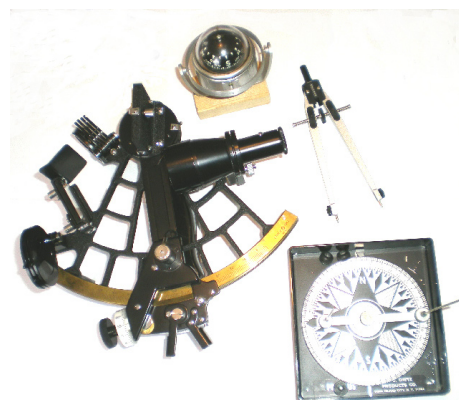
Ann Arbor Sail and Power Squadron

General Meetings are usually held each month, Sept. thru June
See page 3



Boating Education since 1965

54 YEARS SERVING
THE BOATING PUBLIC



CONTACTS

Visit our web site
www.aaspsq.org/

Commander: Ron Schwartz, SN, Life	734-769-3476	schwartzr348@aol.com
Executive Officer: Peggy Moller	734-761-1589	mmoller@umich.edu
Secretary: Lt/C John Barr Jr.	734-483-0839	jmbarrjr@gmail.com
Treasurer: Lt/C Marlene Barr	734-483-0839	mjb_120022535@hotmail.com
Assist. Treasurer: P/C John Barr, AP, Life	734-483-0839	JMBarr@BarrLawFirm.com
Education Officer Ron Schwartz, SN	734-769-3476	schwartzr348@aol.com
Public Relations Officer: P/C John Barr, AP, Life	734-483-0839	JMBarr@BarrLawFirm.com
Chaplain: P/C John Barr, AP, Life	734-483-0839	JMBarr@BarrLawFirm.com
Historian: Ron Schwartz, SN, Life	734-769-3476	schwartzr348@aol.com
Membership Chair: D/Lt/C Carolyn Knaggs, P	734-645-3503	carolynknaggs@me.com
Web Designer: Lt. Peggy Moller	734-761-1589	mmoller@umich.edu
Webmaster: Evrard (Freddy) Ohou		oevfred@umich.edu
Porthole Proofreader: Lt. Peggy Moller	734-761-1589	mmoller@umich.edu
Porthole Publisher/Distribution: Cdr. Ron Schwartz, SN, Life	734-769-3476	schwartzr348@aol.com



Thank you Shih-Chieh Yin for your design of front page of the Porthole

Volunteers are welcome and needed for the following opportunities:

Porthole Staff - Articles, printing and mailing copies, e-mail list and distribution.
Education Staff - Ch. Marine Electronics, Ch. Instructor Development, Ch. Engine Maintenance,
Ch. Teaching Aids, Ch. of various seminars. Misc. Staff - Ch. Member Involvement, Ch. Operations Training. Advertising Staff for public courses and programs.

The Porthole is published when needed by the Ann Arbor Sail and Power Squadron. The articles and opinions expressed therein do not necessarily reflect USPS or AASPS policy. Articles may be reprinted without permission, if credit is given to the author and to the original source. The Porthole is sent in color via e-mail, or via US mail in black and white.

We thank Bradley and George Schwartz and Evrard Ohou for help with computer consulting.

If you are not getting this Porthole by e-mail, in color, please send me your e-mail address. schwartzr348@aol.com



**Ann Arbor Sail and Power Squadron
Meeting 6 P. M. Monday 18 Nov. 2019
Carlyle Grill 3660 Jackson Rd.
Ann Arbor Michigan 48103
Lat. 42° 17.1' N, Long. 83° 48.2' W**

Sail and Power Boating Education

www.aaspsq.org/

We will meet at the Carlyle Grill west of the Lighthouse Car Wash. Order from the menu and pay your own bill. Please call Ron Schwartz 734-769-3476, so we can have enough tables set up. Visit Carlyle Grill web site to see their menu. <http://www.carlylegrill.com/>

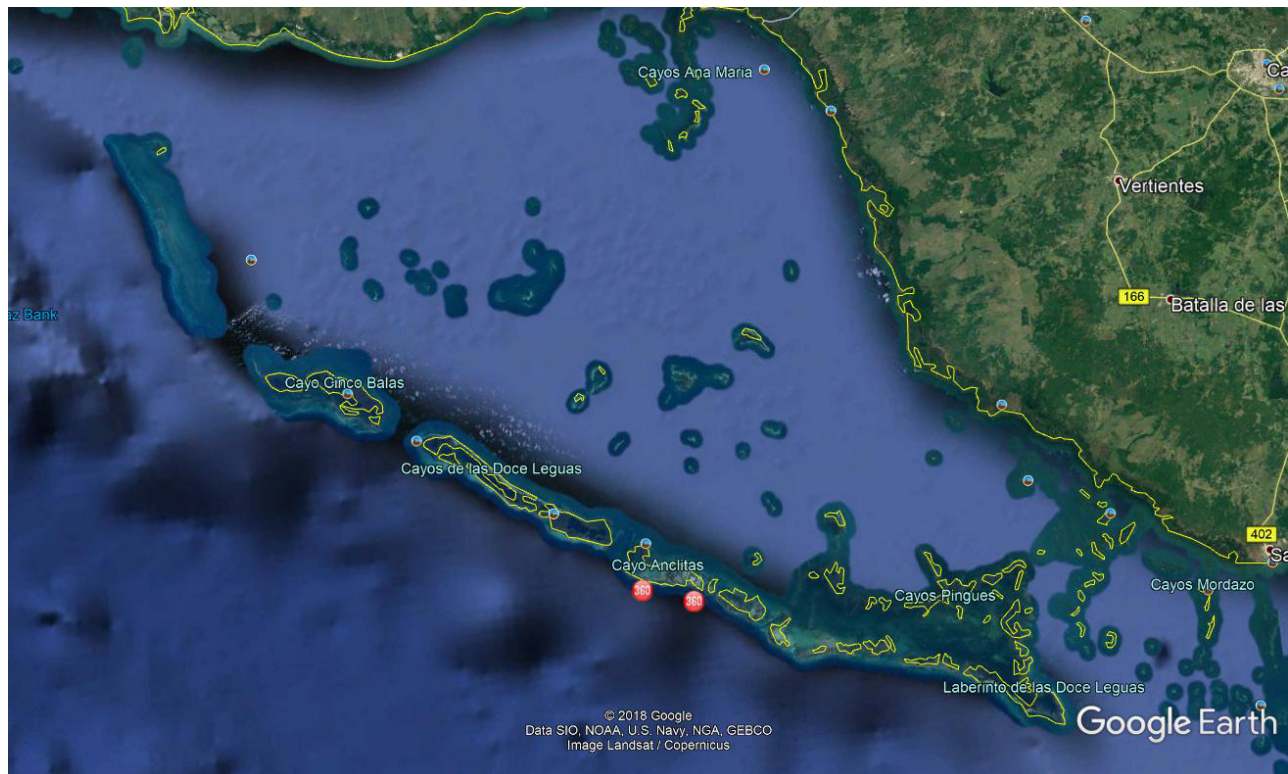


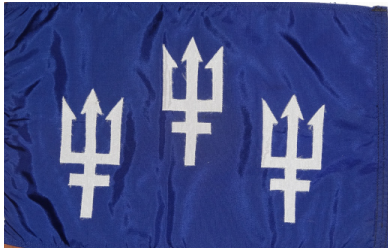
Com. Ron Schwartz, SN



Presentation: Course plotting with currents, and cruising south of Cuba.

Cuba cruising area





Commander's Message

Cdr. Ron Schwartz, SN

With the weather cooling, off we will try hiking for exercise. Ann Arbor has a Legacy Land Conservancy group (<https://legacylandconservancy.org/>) that advertises 6 areas where we can hike. Number 1 is Beckwith Nature Preserve that has a one mile trail in Stockbridge along Portage Creek.

List of Michigan State Parks and Trails is found at <http://www.michigandnr.com/parksandtrails/#list>

Learn about MMSI (Maritime Mobil Service Identity) at this USPS web site
https://www.usps.org/php/mmsi_new/



Attach your boat to your trailer so it can't slide forward or backward.

Boating Education

Courses and seminars available from USPS are listed below. Courses take about 16 hours - 8 weeks . Seminars are about 2 hours long.

Seminars

Advanced Powerboat Handling	AIS Electronics for Boaters	Anchoring
Basic Weather and Forecasting	Boat Handling Under Power	
Boating on Rivers, Locks and Lakes	Crossing Border	Emergencies on Board
Boating on Rivers, Locks and Lakes		Fuel and Boating
Radar for Boaters (RA)	Hands-On Training	How to Use a Chart
		Hurricane Preparation for Boaters
Introduction to Navigation	Knots, Bends, and Hitches	Man Overboard
		Marine Radar
Mariner's Compass Seminar	Mastering the Rules of the Road	Paddle Smart
Propane Systems on Your Boat	Partner in Command	Sail Trim
		Tides and Currents
Trailer Your Boat	Using GPS	Using VHF and VHF/DSC Marine Radio

Advanced courses

Seamanship (S)	Piloting (P)	Instructor Development (ID)	Advanced Piloting (AP)
Cruising and Cruise Planning (C and CP)	Engine Maintenance (EM)	Electronic Navigation (ENCE)	
Marine Communication Systems (MCS)	Marine Electrical Systems (MES)	Sail (Sa) 2009	
Junior Navigation (JN)	Navigation (N)	Weather (Wx) 2012	

We are proposing to have a Piloting course if there are people interested. Please reply to schwartzr348@aol.com and list courses and seminars you would like to take.

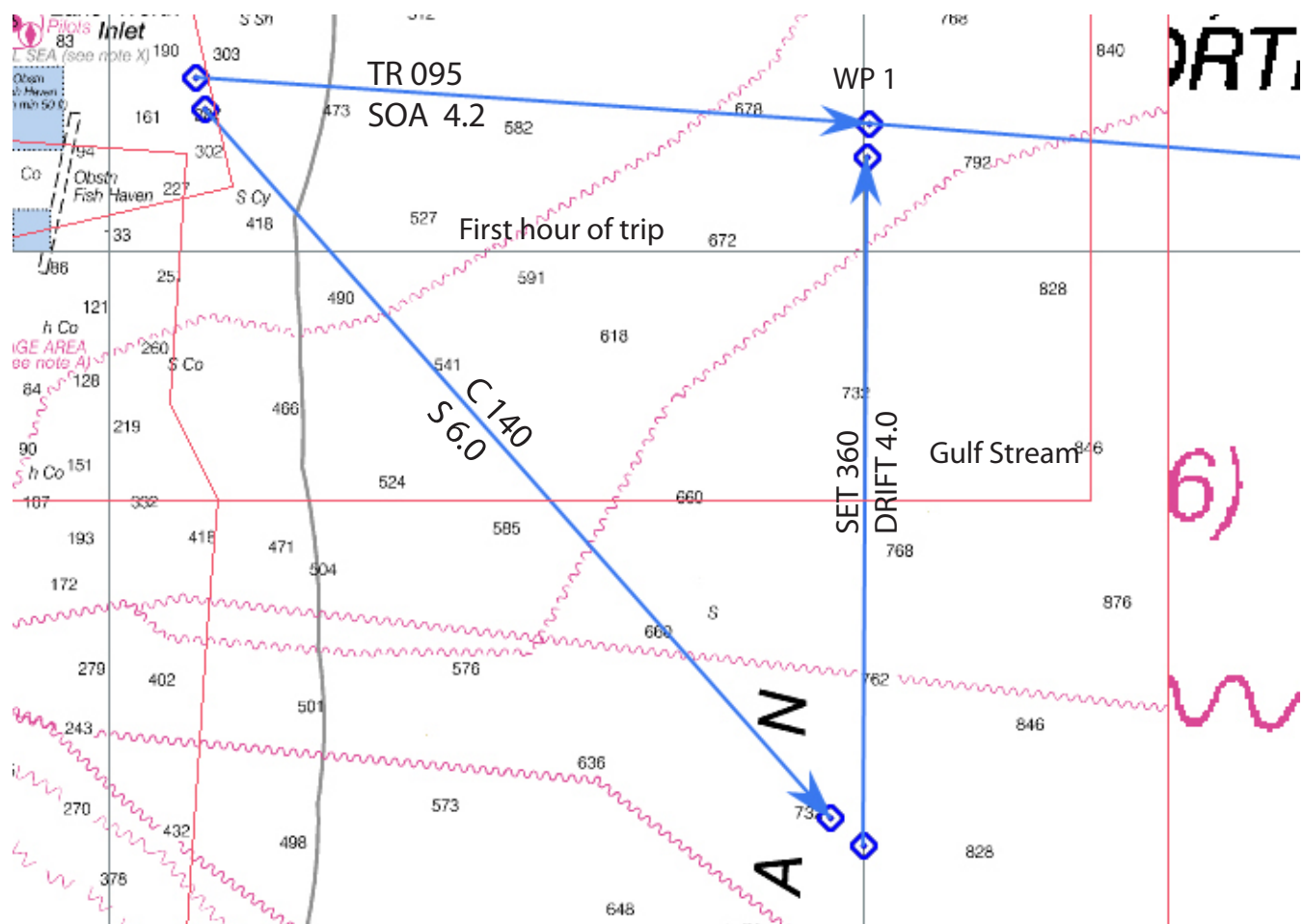
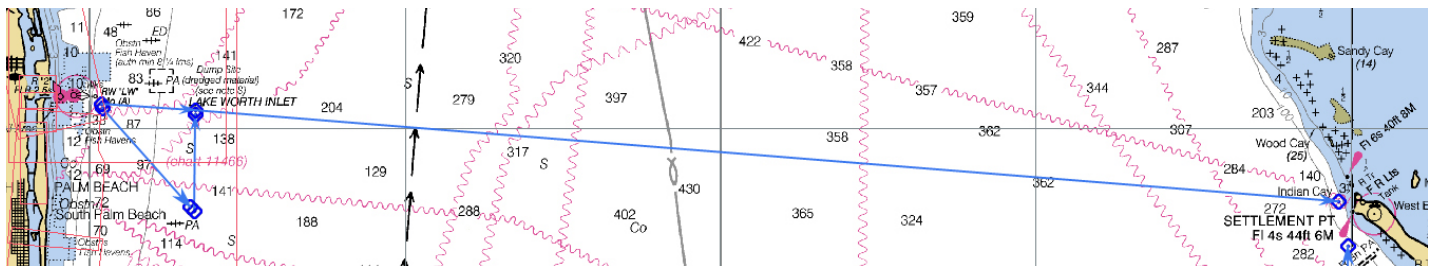
Courses being offered now by various squadrons are advertised, at <http://www.usps.org/cgi-bin/nat/eddept/800/cfindx.cgi?C>

A Partial List of Events

DATE	SPONSOR	EVENT AND LOCATION
Nov. 18	AASPS General Meeting	Presentation on Cruising Cuba, and course plotting
Dec. 16	AASPS Christmas Party at	Buchanan's

Course plotting with a Gulf Stream current correction

Course from West Palm Beach, Florida to Settlement Point, Bahamas. Course 095°, distance 53 nautical miles. A sail boat with an average speed of 6 knots has to steer a true course of 140° to compensate for the 4 knot northerly Gulf Stream current to stay on the 095° course to Settlement Point. The boats net speed along the 095° course is about 4.2 knots. The vector diagram is useful in determining the boat 140° course required to compensate for the current. These are averages. We placed a GPS waypoint 1 mile east of our start point to check our progress. Currents and vectors are taught in the Advanced Piloting Course

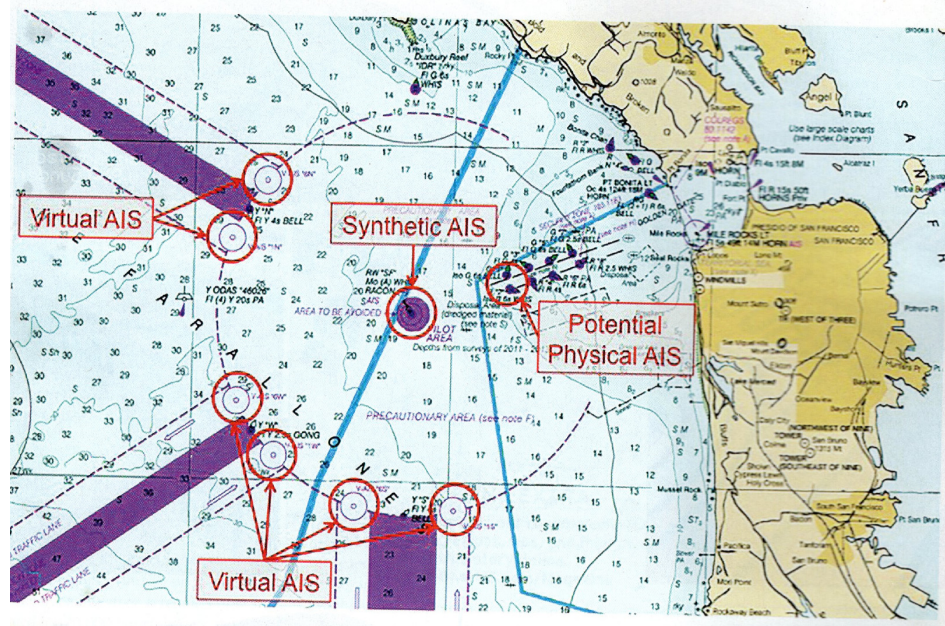


OpenCPN was used draw vectors and lines on charts and get directions and distances. In Design was used to make labels

This 53 mile cruise crossing can be dangerous. Look up the story of two Jupiter, Florida, teenagers that died trying it in 2015.

VIRTUAL NAVIGATION IS HERE, LIKE IT OR NOT

If there's a buoy on your chartplotter, and from the helm it's nowhere to be seen (even with your best 10x50s), is it really there? And, if so, can this really be an aid to YOUR navigation?



The BoatU.S. magazine for August/September of 2015 has an article about virtual eATONS,-- aids to navigation. These are like buoys or towers that show up on your chart, and chart plotter to aid navigation, but do not exist as physical hardware -- there is no physical buoy or tower. . The Coast Guard sends an AIS signal that is received by your AIS/Chart plotter radio and shows the location of a virtual eATON on your chart plotter.

You need a combination radio with AIS (Automatic Identification System) abilities and chart plotting. The Automatic Identification System is a digital VHF radio-based transponder system that can prevent collisions, and can protect your boat from being run down by a huge, fast moving ship. It's a digital radio signal with precise position information.

Look at the internet and at your local marine stores for marine radios with this AIS/Chart plotter ability.