

The Porthole

Dec. 2019



United States Power Squadrons
Come for the Boating Education...Stay for the friends

Ann Arbor Sail and Power Squadron
A unit of United States Power Squadrons in District 9

<http://www.aaspsq.org/>



Sail and Power Boating Education

Ann Arbor Sail and Power Squadron

Christmas Party

6 P.M. Thursday Dec. 19, 2019

Buchanan's home

3045 Foxcroft St., Ann Arbor

Lat. 42° 16.1' N, Long. 83° 42.2' W

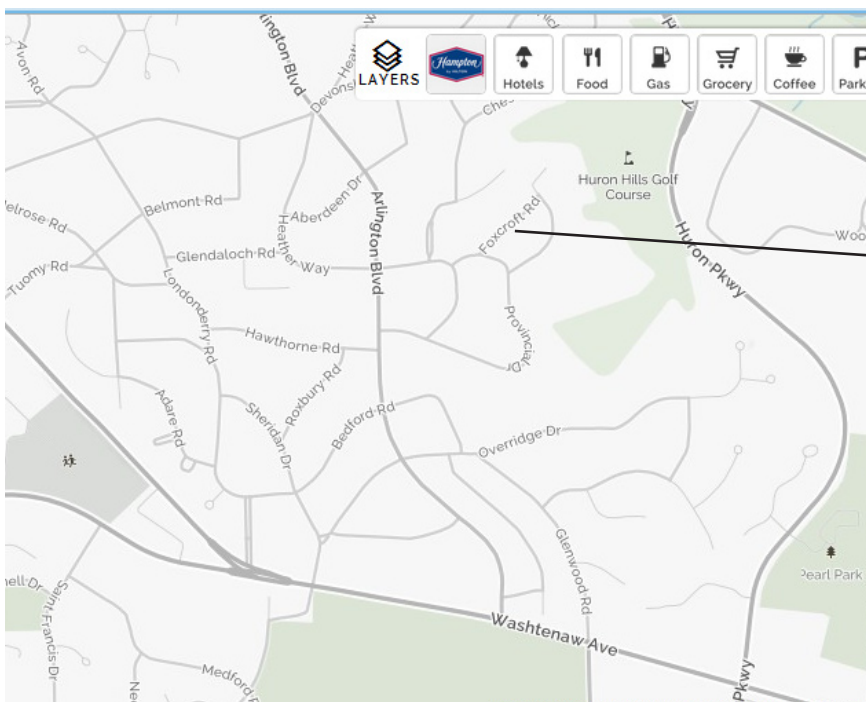
Potluck - Please bring a dish - salad or dessert - to share. Please RSVP to Jeannine Buchanan and tell her what food you will bring . 734- 971-6589.



Power Squadron
members and guests
invited.



Buchanan's house



Directions to Buchanan's. Take Washtenaw to Arlington, west of Huron Parkway. Go north on Arlington to Provincial Dr. and follow Provincial Dr. to Foxcroft (3045).

You will see red ornaments on the spruce in front



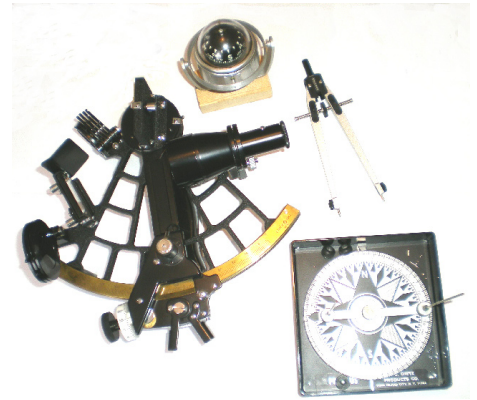
Ann Arbor Sail and Power Squadron

General Meetings are usually held each month, Sept. thru June
See page 3



Boating Education since 1965

54 YEARS SERVING
THE BOATING PUBLIC



CONTACTS

Visit our web site
www.aaspsq.org/

Commander: Ron Schwartz, SN, Life	734-769-3476	schwartzr348@aol.com
Executive Officer: Peggy Moller	734-761-1589	mmoller@umich.edu
Secretary: Lt/C John Barr Jr.	734-483-0839	jmbarrjr@gmail.com
Treasurer: Lt/C Marlene Barr	734-483-0839	mjb_120022535@hotmail.com
Assist. Treasurer: P/C John Barr, AP, Life	734-483-0839	JMBarr@BarrLawFirm.com
Education Officer Ron Schwartz, SN	734-769-3476	schwartzr348@aol.com
Public Relations Officer: P/C John Barr, AP, Life	734-483-0839	JMBarr@BarrLawFirm.com
Chaplain: P/C John Barr, AP, Life	734-483-0839	JMBarr@BarrLawFirm.com
Historian: Ron Schwartz, SN, Life	734-769-3476	schwartzr348@aol.com
Membership Chair: D/Lt/C Carolyn Knaggs, P	734-645-3503	carolynknaggs@me.com
Web Designer: Lt. Peggy Moller	734-761-1589	mmoller@umich.edu
Webmaster: Evrard (Freddy) Ohou		oevfred@umich.edu
Porthole Proofreader: Lt. Peggy Moller	734-761-1589	mmoller@umich.edu
Porthole Publisher/Distribution: Cdr. Ron Schwartz, SN, Life	734-769-3476	schwartzr348@aol.com



Thank you Shih-Chieh Yin for your design of front page of the Porthole

The Porthole is published when needed by the Ann Arbor Sail and Power Squadron. The articles and opinions expressed therein do not necessarily reflect USPS or AASPS policy. Articles may be reprinted without permission, if credit is given to the author and to the original source. The Porthole is sent in color via e-mail, or via US mail in black and white.

If you are not getting this Porthole by e-mail, in color, please send me your e-mail address. schwartzr348@aol.com



America's Boating Club is unable to provide DAN Boater travel safety benefits to members without their email address listed the USPS database. Members can update their email address in one of two ways:

1. Go to the Information Center, www.usps.org/info and update their record.
2. Contact HQ Membership Staff by phone or email:

Deliah Holloway, hollowayd@hq.usps.org, 888-367-8777 ext. 229 or
Lynnda Stevens, stevensl@hq.usps.org, 888-367-8777 ext. 219.



We thank Bradley and George Schwartz and Evrard Ohou for help with computer consulting.



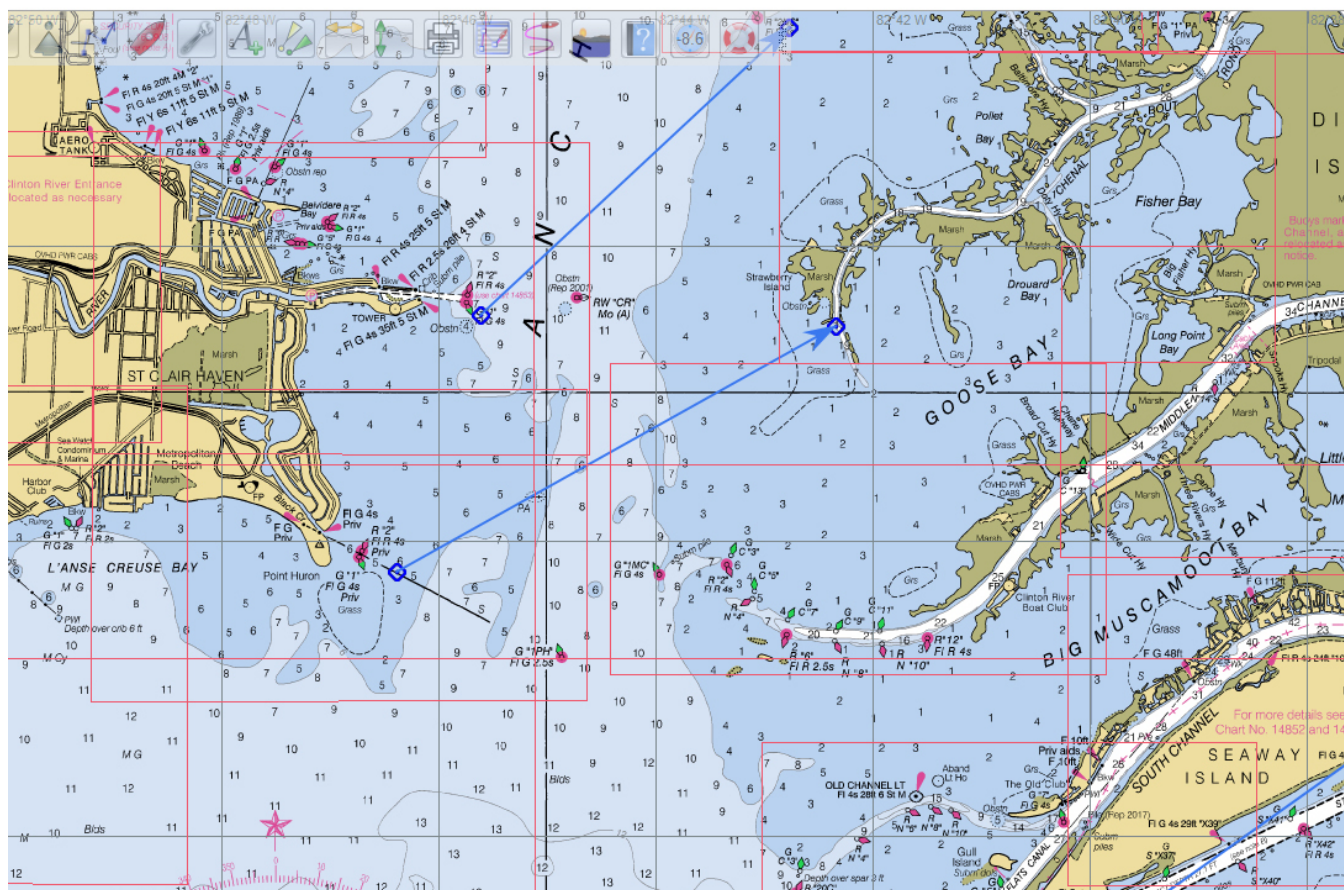
Commander's Message

Cdr. Ron Schwartz, SN

We thank the Buchanans for hosting our Christmas Party. We thank all of our members for their financial support. And special thanks go to our volunteers John Barr, Marlene Barr, John Barr, Jr, Carolyn Knaggs, Larry Marentette, Peggy Moller, and Freddy Ohou for another year of service that keeps our squadron running and eligible to remain in USPS. The year got a bumpy start with the loss of 4 members, and bad weather that prevented several monthly meetings, but we survived and picked up three new members.

For the trailer sailor, Michigan offers launch sites on many of our wonderful lakes. I'm hoping to launch on Lake Skegemog and cruise Elk Lake, and maybe Torch Lake and others next summer.

Enjoy access to all the NOAA nautical digital charts for free by downloading OpenCPN. You can print charts or parts of charts on your home printer. Full size charts can be printed on paper or vinyl at local private printers (Kolossos printers in Ann Arbor is one). NOAA does not sell printed charts, but they provide free digital charts. The chart, below, can be printed on a home printer on 8 1/2" x 11" paper. The blue course lines are drawn with "tools" that are part of OpenCPN, and course and distance can be read on your computer screen. USPS teaches how to use OpenCPN. A one leg course line like the ones shown below can be used as vectors that represent course and speed or current set and drift.

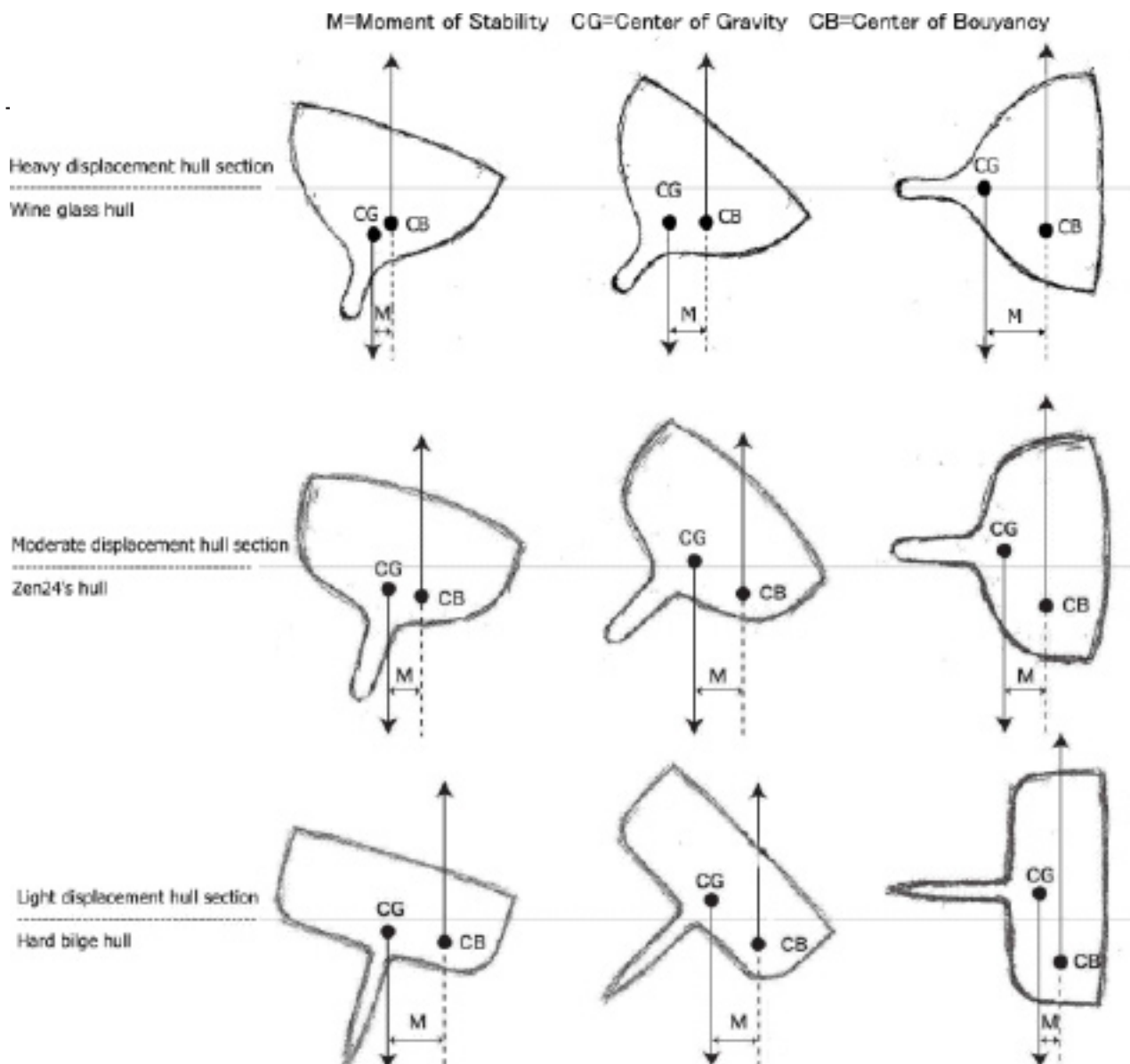


Our Seamanship Course teaches the stability and safety of various boat hull shapes. Wine glass shape bottom boats are the best. They can heel until water comes over the side, and still be righted safely. A small deck at the bow and sides can prevent water from entering the bilge. My 23' sloop is like that.

Flat bottom and shallow V bottom boats with hard chine are stable when heeled to a slight angle, then they tip over and fill with water and lay on their side or upside-down. 18' InterLake sloops and my 15' sloop are like this. I tipped both types over. They fill with water and lay on their sides. They require work to right and empty out the water.

Catamarans are hard to tip over, but when they do they are harder to right.

Canoes and kayaks can have variations of flat to round bottoms. My Old Town canoe has a flat bottom but large radius chines and is easy to tip over. My 16' wood olympic racing kayak has a round bottom and is difficult to prevent it from rolling over. My 8' kayak has a slight V bottom but narrow beam, and it can be rolled over pretty easily.



Ypsilanti Community Chorus

CHRISTMAS CONCERT

Thursday, December 12 – 7:30 pm

Towsley Auditorium on the

Washtenaw Community College Campus

Free

Marlene Barr is a member
of this chorus



Boating Education

Our Piloting course has three students at this time. We will meet Saturday mornings, 10 to 12 AM starting January 4, 2020. We will cancel classes for bad weather.

Piloting is the first of the navigational classes focusing on techniques for piloting a boat in coastal and inland conditions. The course emphasizes planning and checking along with the use of GPS or Bearings on shore objects for determining position, and introduces digital charting along with traditional charting, compass and dead reckoning skills. Plotting, labeling, use of the compass, aids to navigation and a host of related topics are included in this all-new approach to coastal and inland piloting. This course uses the 4x15 plotter and dividers, which must be ordered separately. The Student Kit includes the Student Manual, the Plotting and Labeling Standards Learning Guide and instructions for downloading, installing and using OpenCPN, a marine navigation program that is state-of-the-art and in wide use by commercial and recreational boating enthusiasts.

Our ABC (Basic Boating) class will be Saturdays 12:30 to 2:30 starting March 7, 2020.

Please reply to schwartzr348@aol.com and list courses and seminars you would like to take.

Courses being offered by all local Squadrons are advertised, at <http://www.usps.org/cgi-bin/nat/eddept/800/cfindx.cgi?C>

Courses and seminars available from USPS are listed below. Courses take about 16 hours - 8 weeks .
Seminars are about 2 hours long.

Seminars

Advanced Powerboat Handling AIS Electronics for Boaters Anchoring Boating on Rivers, Locks and Lakes Crossing Border
Emergencies on Board Fuel and Boating Radar for Boaters (RA) Hands-On Training How to Use a Chart Hurricane Preparation for Boaters Introduction to Navigation Knots, Bends, and Hitches Man Overboard Marine Radar
Mariner's Compass Seminar Mastering the Rules of the Road Paddle Smart Propane Systems on Your Boat Partner in Command Sail Trim Tides and Currents Trailering Your Boat Using GPS Using VHF and VHF/DSC Marine Radio

Advanced courses

Seamanship (S) Piloting (P) Instructor Development (ID) Advanced Piloting (AP) Cruising and Cruise Planning (C and CP)
Engine Maintenance (EM) Electronic Navigation (ENCE) Marine Communication Systems (MCS)
Marine Electrical Systems (MES) Sail (Sa) 2009 Junior Navigation (JN) Navigation (N) Weather (Wx) 2012

A Partial List of Events

DATE	SPONSOR	EVENT AND LOCATION
Dec. 19	AASPS	Christmas at Buchanan's
Jan. 7, 2020	AASPS	Piloting class starts
Jan. 20,	AASPS	All members and guests meeting
Feb. 17	AASPS	All members and guests meeting
Mar. 7	AASPS	ABC class starts



Don't delay, reserve your room today
Guest room reservations only \$169 night!

If you're planning to attend the 2020 Annual Meeting of America's Boating Club, Feb. 9-16, at the fabulous Marriott Sawgrass Resort in Ponte Vedra Beach, Florida, now's the time to reserve your room.

Located just over 30 miles from the Jacksonville International Airport, the Marriott Sawgrass Resort features guest rooms at the America's Boating Club room rate of \$169 as well as suites and family-friendly villas.

The resort has seven restaurants and lounges for you to choose from. Besides a round of golf at TPC Sawgrass golf club, you can visit the fitness center, multiple pools, a SurfStream wave machine, and complimentary beach access at the Cabana Beach Club.

Be sure to book a visit to the full-service Sawgrass spa, which has 18 treatment rooms, a private spa pool, and nail salon, as well as a fitness center and blow-dry bar. Visit the hotel website to learn more.