

# The Porthole

May 2020



**United States Power Squadrons**  
*Come for the Boating Education...Stay for the friends*

Ann Arbor Sail and Power Squadron  
A unit of United States Power Squadrons in District 9

<http://www.aaspsq.org/>

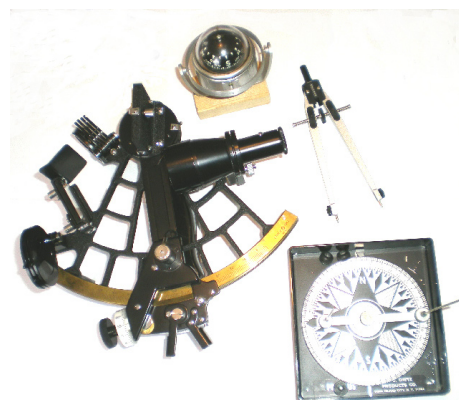
# Ann Arbor Sail and Power Squadron

General Meetings are usually held each month, Sept. thru June  
See page 3



Boating Education since 1965

55 YEARS SERVING  
THE BOATING PUBLIC



## CONTACTS

Visit our web site  
[www.aaspsq.org/](http://www.aaspsq.org/)

Commander: Ron Schwartz, SN, Life	734-769-3476	<a href="mailto:schwartzr348@aol.com">schwartzr348@aol.com</a>
Executive Officer: Peggy Moller	517-937-9817	<a href="mailto:mmoller@umich.edu">mmoller@umich.edu</a>
Secretary: Lt/C John Barr Jr.	734-483-0839	<a href="mailto:jmbarrjr@gmail.com">jmbarrjr@gmail.com</a>
Treasurer: Lt/C Marlene Barr	734-483-0839	<a href="mailto:mjb_120022535@hotmail.com">mjb_120022535@hotmail.com</a>
Assist. Treasurer: P/C John Barr, AP, Life	734-483-0839	<a href="mailto:JMBarr@BarrLawFirm.com">JMBarr@BarrLawFirm.com</a>
Education Officer Ron Schwartz, SN	734-769-3476	<a href="mailto:schwartzr348@aol.com">schwartzr348@aol.com</a>
Public Relations Officer: P/C John Barr, AP, Life	734-483-0839	<a href="mailto:JMBarr@BarrLawFirm.com">JMBarr@BarrLawFirm.com</a>
Chaplain: P/C John Barr, AP, Life	734-483-0839	<a href="mailto:JMBarr@BarrLawFirm.com">JMBarr@BarrLawFirm.com</a>
Historian: Ron Schwartz, SN, Life	734-769-3476	<a href="mailto:schwartzr348@aol.com">schwartzr348@aol.com</a>
Membership Chair: D/Lt/C Carolyn Knaggs, P	734-645-3503	<a href="mailto:carolynknaggs@me.com">carolynknaggs@me.com</a>
Web Designer: Lt. Peggy Moller	517-937-9817	<a href="mailto:mmoller@umich.edu">mmoller@umich.edu</a>
Webmaster: Evrard (Freddy) Ohou		<a href="mailto:oevfred@umich.edu">oevfred@umich.edu</a>
Porthole Proofreader: Lt. Peggy Moller	517-937-9817	<a href="mailto:mmoller@umich.edu">mmoller@umich.edu</a>
Porthole Publisher/Distribution: Cdr. Ron Schwartz, SN, Life	734-769-3476	<a href="mailto:schwartzr348@aol.com">schwartzr348@aol.com</a>

Thank you Shih-Chieh Yin for your design of front page of the Porthole

The Porthole is published when needed by the Ann Arbor Sail and Power Squadron. The articles and opinions expressed therein do not necessarily reflect USPS or AASPS policy. Articles may be reprinted without permission, if credit is given to the author and to the original source. The Porthole is sent in color via e-mail, or via US mail in black and white.

**If you are not getting this Porthole by e-mail, in color, please send me your e-mail address. [schwartzr348@aol.com](mailto:schwartzr348@aol.com)**

America's Boating Club is unable to provide DAN Boater travel safety benefits to members without their email address listed in the USPS database. Members can update their email address in one of two ways:

1. Go to the Information Center, [www.usps.org/info](http://www.usps.org/info) and update your record.
2. Contact HQ Membership Staff by phone or email: Deliah Holloway, [hollowayd@hq.usps.org](mailto:hollowayd@hq.usps.org), Phone 1-888- 367-8777 ext. 229 or Lynnda Stevens, , [stevensl@hq.usps.org](mailto:stevensl@hq.usps.org) 1-888-367-8777 ext. 219.

We thank Bradley and George Schwartz and Evrard Ohou for help with computer consulting.

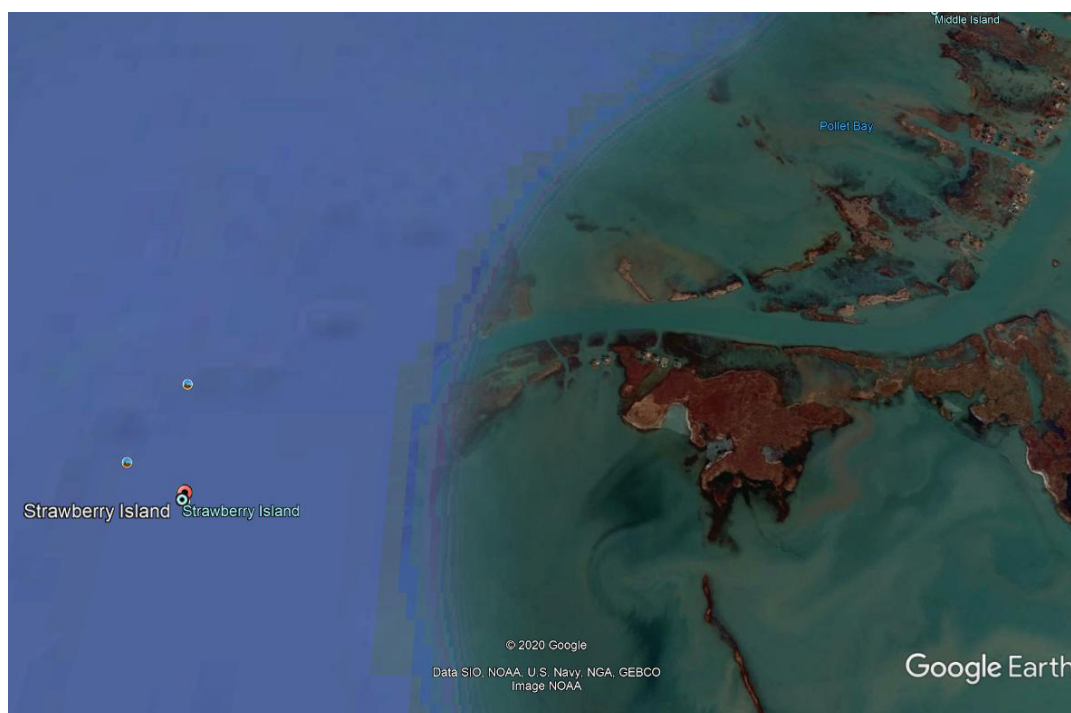
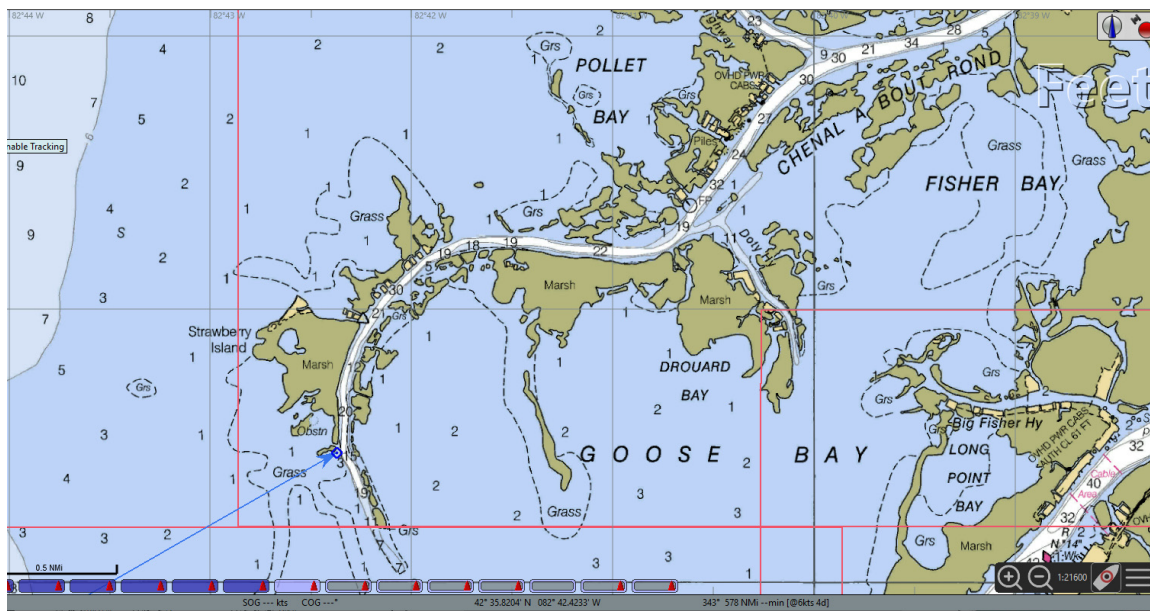






Lake St. Clair High Water

On a Friday afternoon 25 years ago, I launched at Lake St. Clair Metropark in preparation for a Saturday USPS Warren Squadron rendezvous in Fisher Bay. I sailed out to Strawberry Island and anchored behind the island for wind protection in 2 feet of water at 42° 35.8 N 82° 42.5 W, with no anchor light, to sleep. At 0200 a Coastguard patrol, in a 30' inflatable boat, woke me up and said they almost ran over me. I turned on my running lights. They did not ticket me. The fish flies had coated my furled sails. Saturday morning I sailed back to Metropark and picked up Shirley. We sailed back to Fisher Bay for partying and swimming, then to a squadron members cottage near the North Channel for dinner, then back to Metropark. A year ago the Strawberry Island was completely under water -- see the Google Earth satellite picture.



Send your favorite nautical photos to [aapsclasses@aol.com](mailto:aapsclasses@aol.com)



## Commander's Message

Cdr. Ron Schwartz, SN



*Valkyrie* is on a world cruise. This is an excerpt of their log from 2015. Go to their web site for text and pictures of their cruise.

<https://psc37valkyrie.wordpress.com/2016/01/16/ensenada-to-turtle-bay-nov-dec-2015/>

Ensenada to Turtle Bay, Nov-Dec 2015 by psc37valkyrie

11-17-15 (last day for) Ensenada, Mexico Thursday 6:32am

John's 'cold' is at the two-week mark, mine at two days. Goody. I love having swollen glands and a cough-y, snotty feeling going on.

*Trovita* is on their way on their grand adventure down the Baja coast, and we'll be 3 hours behind them. If there's any wind at all, we'll put out the whisker pole and could make the (40 mi) trip in 6-7 hours. They'll leave their anchor light on and monitor channel 69 to let us know of anything unusual along the way and to help guide us in if we arrive after dark.

8:24am is when we backed out of our slip. I'm really bummed that I didn't get a chance to say goodbye to Bob & Jane and didn't give Bob a boat card. I left one on the dock - I hope he finds it. We were really lucky to have him as a dock-mate - truly golden, that man.

Saw dolphins this morning (got a picture) and saw sea lions on the green buoy as we exited the harbor - another great photo that I didn't get (although I did get one when we got fuel yesterday). There were two of them and they both kind of sat up and looked at us - almost dog-like. I would have wanted to pet them or feed them if we were much closer.

I don't know if I'll ever get tired of watching the sea life - even the stupid gulls are interesting - they'll glide in a group just above the water, or we'll come across one just floating, sitting right where we're heading. Then it'll fly indignantly off. One of my absolutely most-favorites are the pelicans. They're right up there with herons - a pre-historic throw-back. They're gawky and gangly and glide like nobody's business, until they see something to spear-gun themselves upon and splat-splash into the water.

### Pneumonic plague from Wikipedia

The pneumonic form of plague arises from infection of the lungs. It causes coughing and thereby produces airborne droplets that contain bacterial cells and are likely to infect anyone inhaling them. The incubation period for pneumonic plague is short, usually two to four days, but sometimes just a few hours. The initial signs are indistinguishable from several other respiratory illnesses; they include headache, weakness and spitting or vomiting of blood. The course of the disease is rapid; unless diagnosed and treated soon enough, typically within a few hours, death may follow in one to six days; in untreated cases mortality is nearly 100%.[14][15]

# Boating Education

**Our ABC (America's Boating Course) is on a self study program until the coronavirus leaves.**

Please reply to [schwartzr348@aol.com](mailto:schwartzr348@aol.com) and list courses and seminars you would like to take.

Courses being offered by all local Squadrons are advertised, at <http://www.usps.org/cgi-bin/nat/eddept/800/cfindx.cgi?C>

**Large wave boating ?** The June/July 2014 issue of BoatU.S. magazine has good tips to staying afloat.

Courses and seminars available from USPS are listed below. Courses take about 16 hours - 8 weeks . Seminars are about 2 hours long.

## Seminars

Advanced Powerboat Handling   AIS Electronics for Boaters   Anchoring   Boating on Rivers, Locks and Lakes   Crossing Border   Emergencies on Board   Fuel and Boating   Radar for Boaters (RA)   Hands-On Training   How to Use a Chart   Hurricane Preparation for Boaters   Introduction to Navigation   Knots, Bends, and Hitches   Man Overboard   Marine Radar   Mariner's Compass Seminar   Mastering the Rules of the Road   Paddle Smart   Propane Systems on Your Boat   Partner in Command   Sail Trim   Tides and Currents   Trailering Your Boat   Using GPS   Using VHF and VHF/DSC Marine Radio

## Advanced courses

Seamanship (S)   Piloting (P)   Instructor Development (ID)   Advanced Piloting (AP)   Cruising and Cruise Planning (C and CP)   Engine Maintenance (EM)   Electronic Navigation (ENCE)   Marine Communication Systems (MCS)   Marine Electrical Systems (MES)   Sail (Sa) 2009   Junior Navigation (JN)   Navigation (N)   Weather (Wx) 2012

### A Partial List of Events

DATE	SPONSOR	EVENT AND LOCATION
------	---------	--------------------

All meetings are canceled until the coronavirus is gone.

