

The Porthole

October 2016



United States Power Squadrons
Come for the Boating Education...Stay for the friends

Ann Arbor Sail and Power Squadron
A unit of United States Power Squadrons in District 9

<http://www.aaspsq.org/>

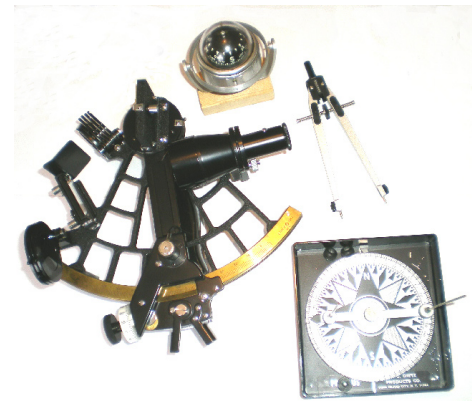
Ann Arbor Sail and Power Squadron

General Meetings are usually held each month, Sept. thru June
See page 3



Boating Education since 1965

51 YEARS SERVING
THE BOATING PUBLIC



Visit our web site
www.aaspsq.org/

CONTACTS

Commander: Ron Schwartz, SN, Life	734-769-3476	AAPSclasses@aol.com
Executive Officer:		
Administrative Officer: Lt/C Jeannine Buchanan	734-971-6589	BuchananRA@msn.com
Secretary: P/C Robert Buchanan, P	734-971-6589	BuchananRA@msn.com
Treasurer: Lt/C Marlene Barr	734-483-0839	mjb_120022535@hotmail.com
Assist. Treasurer: P/C John Barr, AP, Life	734-483-0839	JMBarr@BarrLawFirm.com
SEO: P/C Arthur Pinsak, SN, Life	734-973-0441	apnsharon@aol.com
Assist. SEO: P/C Robert Buchanan, P	734-971-6589	BuchananRA@msn.com
Vessel Safety Check:		
Public Relations Officer: P/C John Barr, AP, Life	734-483-0839	JMBarr@BarrLawFirm.com
Nominating: P/C Robert Buchanan, P	734-971-6589	BuchananRA@msn.com
Chaplain: P/C Arthur Pinsak, SN, Life	734-973-0441	apnsharon@aol.com
Historian: P/C Robert Buchanan, P	734-971-6589	BuchananRA@msn.com
Conference Coord.: Lt. Sharon A. Pinsak	734-973-0441	apnsharon@aol.com
Membership Chair: D/Lt/C Carolyn Knaggs, P	734-645-3503	cknaggs@reinhardtrealtors.co
Webmaster: Evrard (Freddy) Ohou		oevfred@umich.edu
Porthole Proofreader: Lt. Peggy Moller	734-761-1589	mmoller@umich.edu
Porthole Publisher/Distribution: Cdr. Ron Schwartz, SN, Life	734-769-3476	AAPSclasses@aol.com



2017 Nominating Committee: P/C John Barr, AP, P/C Bob Buchanan, P, P/C Arthur Pinsak, SN

Thank you Shih-Chieh Yin for your design of front page of the Porthole

Volunteers are welcome and needed for the following opportunities:

Photographer needed to take pictures at our meetings and e-mail them to our Porthole publisher.

Porthole Staff - Articles, printing and mailing copies, e-mail list and distribution.

Education Staff - Ch. Marine Electronics, Ch. Instructor Development, Ch. Engine Maintenance, Ch. Teaching Aids, Ch. of various seminars.

Misc. Staff - Ch. Member Involvement, Ch. Operations Training. Advertising Staff for public courses and programs.

The Porthole is published ten times a year, September through June, by the Ann Arbor Sail and Power Squadron. The articles and opinions expressed therein do not necessarily reflect USPS or AASPS policy. Articles may be reprinted without permission, if credit is given to the author and to the original source. The Porthole is sent in color via e-mail, or via US mail in black and white.

We thank Bradley and George Schwartz and Evrard Ohou for help with computer consulting.





**Ann Arbor Sail and Power Squadron
Meeting 6 P. M. Monday 17 Oct. 2016
Carlyle Grill 3660 Jackson Rd.
Ann Arbor Michigan 48103
Lat. 42° 17.1' N, Long. 83° 48.2' W**

Sail and Power Boating Education

www.aaspsq.org/

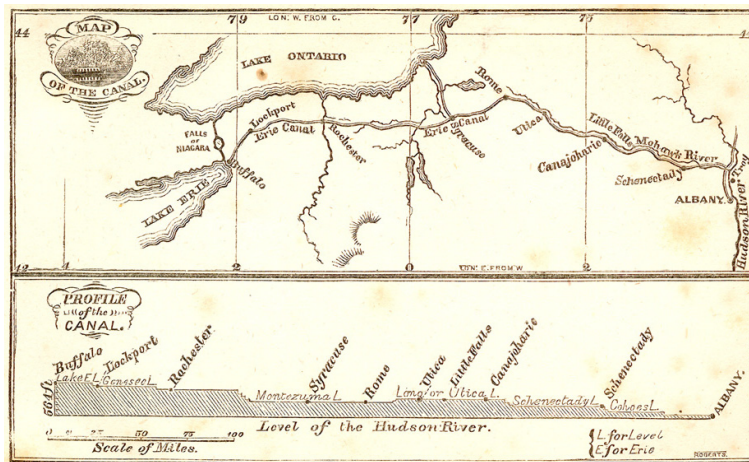
We will meet at the Carlyle Grill west of the Lighthouse Car Wash. Order from the menu and pay your own bill. Please call Jeannine Buchanan 734-971-6589, so we can have enough tables set up. Visit Carlyle Grill web site to see their menu. <http://www.carlylegrill.com/>



Bill and Marlene Thomas will talk about a 1995 boat trip to bring a 1978 Chris Craft 45 Tournament Fisherman from Boston to its new home of Algonac, Michigan via Erie Canal and the Welland Canal.

Bill is a lifetime boater, having spent his childhood summers on the Canadian side of the Detroit River across from Belle Isle in Riverside, and later years including cruising Lake Huron, Georgian Bay, the North Channel, Lake Michigan, and Lake Erie.

Erie Canal





Commander's Message

Cdr. Ron Schwartz, SN

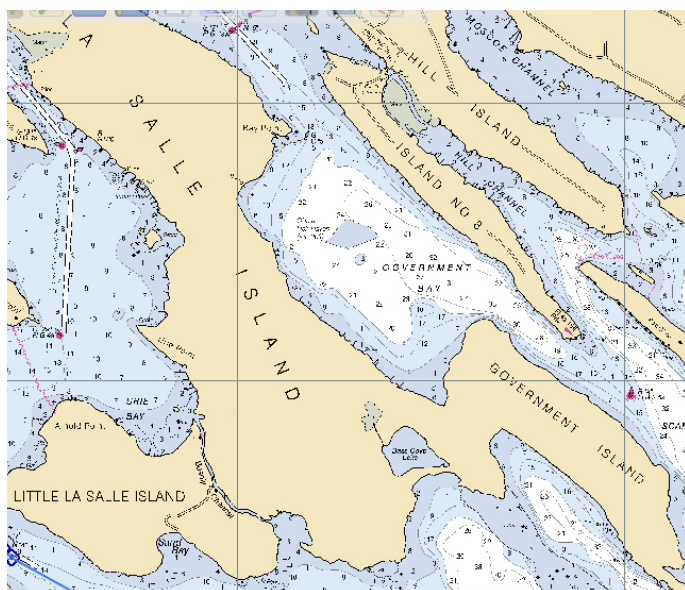


Dave Krick donated a copy of the 1994 edition of Richardsons' Chartbook + Cruising Guide for Lake Superior to our squadron. He is moving to the east coast and couldn't bear to recycle it. He had located us thru our website. Thank you David. It is a beaut.

"Have you seen my dog ?" While looking at charts of the Les Cheneaux area, in preparation for our ABC class, it brought back a memory of cruising there in the mid 1990's. I had launched my classic mahogany gaff sloop, *Soft Shoal*, at a state launch site southwest of De Tour Village into Lake Huron on Tuesday before the Les Cheneaux Wood Boat Show on Saturday in Hessel, Michigan. It was late in the afternoon, so I sailed and motored into Whitney Bay to spend the night. The next morning I was awakened by some gentle splashing and crawled out of my cuddy cabin and saw a doe and fawn near the shore. I had breakfast, then sailed up the St Marys River to Lime Island, walked around the island to view the old village, lime reducing furnaces, and two huge oil tanks used to fuel freighters. I played the dilapidated badly out of tune piano in the old school house, then spent Wednesday night at the Lime Island dock. On Thursday, I sailed west along the northern shore of Lake Huron toward Hessel, beating into gentle westerly winds. When I got into the Les Cheneaux Islands I motored along and stopped on the shore of Government Island at a sandy spot to take a short swim in the cold clear water. While there, a small motor boat with a fellow and his wife and daughter buzzed by, then stopped and asked, "Have you seen my dog ?" He had camped on the island and his dog had chased a deer and had got lost. I had not seen his dog, and as the chart below shows, Government Island is a small part of La Salle Island -- a lot of space for his dog to get lost. He and I continued on our journeys, he to find his dog, and I to anchor Thursday night in Mackinac Bay. On Friday I got up and cleaned up and shaved in the cockpit of my boat, pulled up my anchor and sailed around the corner to Hessel for the Friday night festivities, Saturday boat and arts and craft show.

On Sunday morning I sailed to Les Cheneaux Yacht Club on Marquette Island's Pleasant Point for brunch and church service for the boat owners in the show, and played their old out of tune piano.

The buoy system is interesting around Hessel. Entering from the west is a standard red-right-returning. But entering from the east it is green on the right. I suppose this is because going along the coast near Hessel in a westerly direction you are going towards the sea. You have to look closely at the chart to know which side of any buoy is the best side.



La Salle Island and Government Island in the Les Cheneaux Islands in Northern Lake Huron



P/Lt.C Shirley and Cdr. Ron Schwartz, SN on *Soft Shoal* 2002 at the boat show. Anyone want to bump a volleyball ?



Les Cheneaux Antique Wooden Boat Show in Hessel



Les Cheneaux Islands Yacht Club



Secretary's Message

P/C Bob Buchanan, P



You may have read the September Porthole but could not attend our September squadron meeting. What is the mysterious phantom ship of Lake Superior? Perhaps the *Flying Dutchman*, a legendary ghost ship that can never make port and is doomed to sail the oceans forever?

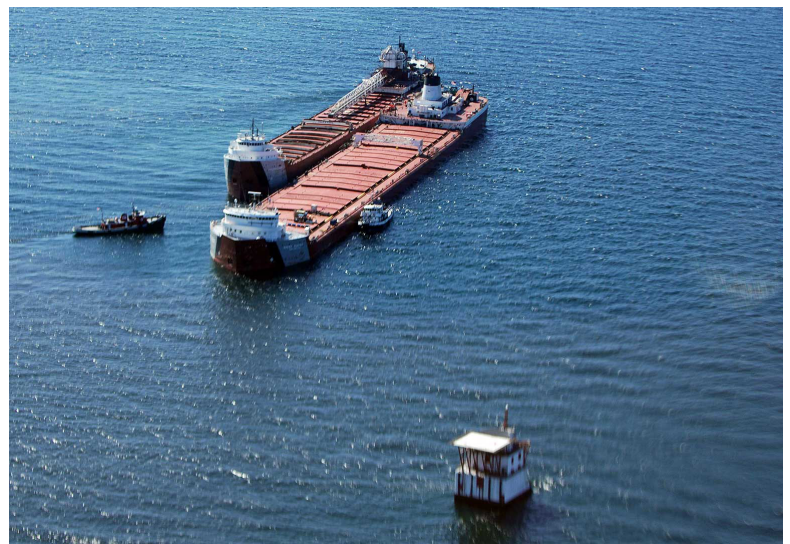
The ship really is Canadian National's *Roger Blough*, a 858' ore carrier that departed Duluth on May 26th of this year with 44,000 tons of taconite. On May 27th, the *Blough* ran aground on Gros Cap Reef, clearly marked by Gros Cap Light in a location with 25 -26' of charted depth. *Blough's* mid-summer draft is 27.1' The picture here looking aft shows Great Lakes Towing's tug *Missouri* and Purvis Marine's *Avenger IV*, both tugs under full power as shown by their wake.. The next picture looking forward again shows tug *Missouri* and Purvis' *Ivan Purvis*, both working hard but their efforts were of no avail. The location of Gros Cap Light is obvious.

Following several days to evaluate the problem, another CN ship, the *Phillip R. Clark* (shown here) came along side to unload a part of *Blough's* cargo although the *Clark* has only about half the capacity of *Blough*. Again, proximity to the Gros Cap Reef Light is clear. This effort was successful so *Blough* was able to float free and move under her own power to Waiska Bay outside of the shipping lanes. Soon *Arthur M. Anderson*, another CN ship, arrived to finish removing the cargo of taconite. Divers reported significant hull damage so *Blough* had to proceed to the Bay Shipbuilding (now Fincantieri) drydock at Sturgeon Bay, leaving Waiska Bay on June 5th. According to people familiar with the situation, permtraitting *Blough* to lock down through the Poe Lock at the Soo was a difficult decision due to the risk of lock damage by the torn hull. Next *Blough* went to anchor at Detour to load additional drinking water.

Finally repairs were completed on August 8th so *Roger Blough* is back in service. The remaining question is why did the ship hit the rocks. Photos by USCG Traverses City and Sault Ste. Marie.



Tugs *Missouri* and *Avenger IV* pullin on *Roger Blough*



Phillip R. Clark (shown here) came along side to unload *Blough's* cargo

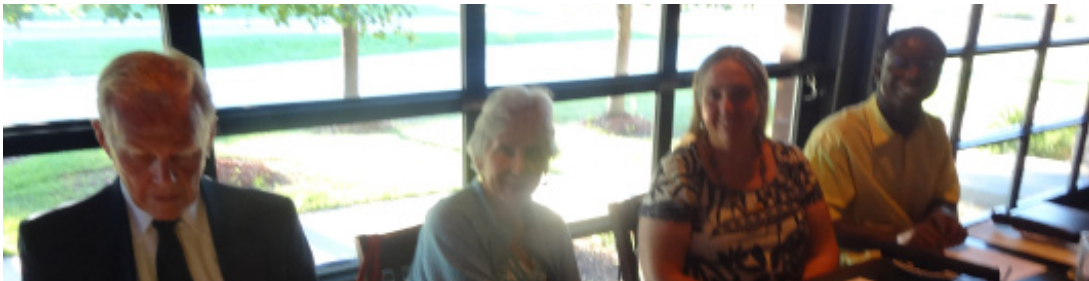


Roger Blough with tugboats and Gros Cap Light



D/Lt/C Carolyn Knaggs Jeannine and PC Bob Buchanan, P

Photos from September's meeting

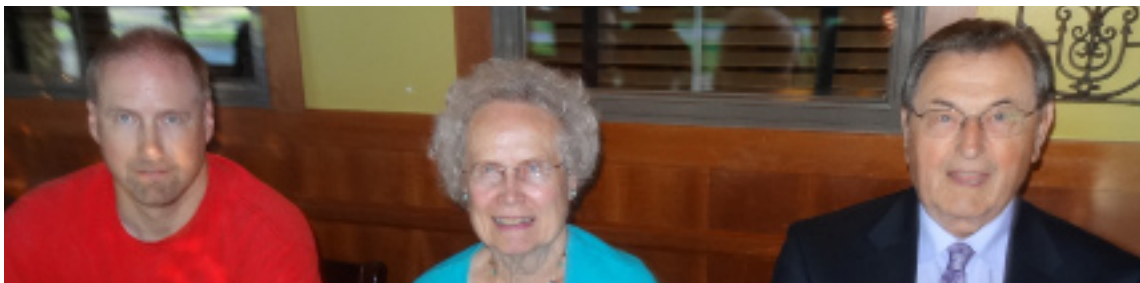


P/C Art Pinsak, SN

1st Lt Sharon Pinsak

1st Lt Peggy Moller

Freddy Ohou



John Barr Jr.

Lt/C Marlene Barr

P/C John Barr, AP

Boating Education

Basic Boating Course. We have 2 students and 5 instructors for our Tuesday nights ABC classes. 'What more can you ask for ?' Both students want the 16 hour ABC class. One student learned about our course from his friends at the Ford Yacht Club where he keeps his boat. The other student learned about us through his boating club -- ASI (American Sailing Institute) that requires our 16 hour ABC class before taking their Level 2 sailing course. We started with the 8 hour Mich. DNR course and used our ABC PowerPoint slides because the DNR course does not have visual aids. This was awkward because the two courses don't have the same topic sequences. So, since both students want the 16 ABC course, we quickly switched to that the second week.

Cruise Planning Course. I would like to take the USPS Cruise Planning course starting mid November or December as a way of brightening up the winter months. Also, that is a course that I have not taken. If you want that course also, call me at 734-769-3476. We will meet in my dining room, or yours, and have Snacks and Cruising Planning and take turns giving the lectures. We will meet on Sunday or Monday nights -- whichever is most convenient that week, and use digital charts and Google Earth pictures to view each weeks table top cruise location. Cost is \$45 for members for the USPS text book. Ron.

A Partial List of Events

DATE	SPONSOR	EVENT AND LOCATION
Oct. 11,18,25	AASPS	ABC course at St. Joseph's Hospital classrooms
Oct. 17	AASPS	Meeting at Carlyle Grill 6 PM. Bill Thomas: Erie Canal Trip
Oct. 28-30	D9	Fall conference. Grand Rapids

From the October 2016 Anchor Lines of the Dearborn Power Squadron, by Lt/C Frank Muylaert, SN

USPS DIGITAL MEDIA LIBRARY

"This is the official showcase and repository for multiple formats of digital media focused on boating safety and safe boating education." It features a number of slide shows and videos about boating. Examples: Life Jackets, Preparing to depart, Anchoring a boat, Docking. These videos were shot by squadron members at various locations and with their boats (from dinghies to cruisers). They can be downloaded so we can use them in our boating classes. They should be a great promotional tool for USPS and can be seen on YouTube, Facebook, Twitter, Pinterest, etc. Go to " USPS Digital Media Library " at www.uspsvml.org and check them all out. P.S., put it on your favorites -- new videos will be added. The official launch is October 1, 2016.

offcenterharbor.com is web site about building wood boats. They have very good, entertaining videos. Sign up for free by entering your first name and email address.

MERIT MARKS: It is time to put together the MERIT MARK report for the 2016. Please send me a list of what you have done and how much time was spent in helping the Ann Arbor Sail & Power Squadron.