

The Porthole

Sept. Oct. 2017



United States Power Squadrons®

America's Boating Club®

For Boaters, By Boaters

Come for the Boating Education...Stay for the friends

Ann Arbor Sail and Power Squadron

A unit of United States Power Squadrons in District 9

<http://www.aaspsq.org>

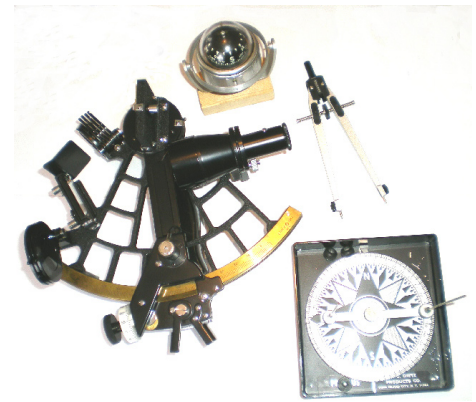
Ann Arbor Sail and Power Squadron

General Meetings are usually held each month, Sept. thru June
See page 3



Boating Education since 1965

52 YEARS SERVING
THE BOATING PUBLIC



Visit our web site
www.aaspsq.org

CONTACTS

Commander: Ron Schwartz, SN, Life	734-769-3476	AAPSclasses@aol.com
Executive Officer: Lt/C Peggy Moller	734-761-1589	mmoller@umich.edu
Administrative Officer: Lt/C Robert Buchanan	734-971-6589	BuchananRA@msn.com
Secretary: Lt/C John Barr Jr.	734-483-0839	jmbarrjr@gmail.com
Treasurer: Lt/C Marlene Barr	734-483-0839	mjb_120022535@hotmail.com
Assist. Treasurer: P/C John Barr, AP, Life	734-483-0839	JMBarr@BarrLawFirm.com
SEO: P/C Arthur Pinsak, SN, Life	734-973-0441	apnsharon@aol.com
Assist. SEO: P/C Robert Buchanan, P	734-971-6589	BuchananRA@msn.com
Vessel Safety Check:		
Public Relations Officer: P/C John Barr, AP, Life	734-483-0839	JMBarr@BarrLawFirm.com
Chaplain: P/C Arthur Pinsak, SN, Life	734-973-0441	apnsharon@aol.com
Historian: P/C Robert Buchanan, P	734-971-6589	BuchananRA@msn.com
Conference Coord.: Lt. Sharon A. Pinsak	734-973-0441	apnsharon@aol.com
Membership Chair: D/Lt/C Carolyn Knaggs, P	734-645-3503	cknaggs@reinhardtrealtors.co
Webmaster: Evrard (Freddy) Ohou		oevfred@umich.edu
Porthole Proofreader: Lt/C Peggy Moller	734-761-1589	mmoller@umich.edu
Porthole Publisher/Distribution: Cdr. Ron Schwartz, SN, Life	734-769-3476	AAPSclasses@aol.com



Thank you Shih-Chieh Yin for your design of front page of the Porthole

Volunteers are welcome and needed for the following opportunities:

Porthole Staff - Articles, printing and mailing copies, e-mail list and distribution.

Education Staff - Ch. ABC, Ch. Marine Electronics, Ch. Instructor Development, Ch. Engine Maintenance, Ch. Teaching Aids, Ch. of various seminars. Misc. Staff - Ch. Member Involvement, Ch. Operations Training. Advertising Staff for public courses and programs.

The Porthole is published September through June, by the Ann Arbor Sail and Power Squadron. The articles and opinions expressed therein do not necessarily reflect USPS or AASPS policy. Articles may be reprinted without permission, if credit is given to the author and to the original source. The Porthole is sent in color via e-mail, or via US mail in black and white.

We thank Bradley and George Schwartz and Evrard Ohou for help with computer consulting.



Ann Arbor Sail and Power Squadron
Meeting 6 P. M. Monday 18 Sept. 2017
Carlyle Grill 3660 Jackson Rd.
Ann Arbor Michigan 48103
Lat. 42° 17.1' N, Long. 83° 48.2' W

Sail and Power Boating Education

www.aaspsq.org

We will meet at the Carlyle Grill west of the Lighthouse Car Wash. Order from the menu and pay your own bill. Please call Jeannine Buchanan 734-971-6589, so we can have enough tables set up. Visit Carlyle Grill web site to see their menu. <http://www.carlylegrill.com/>

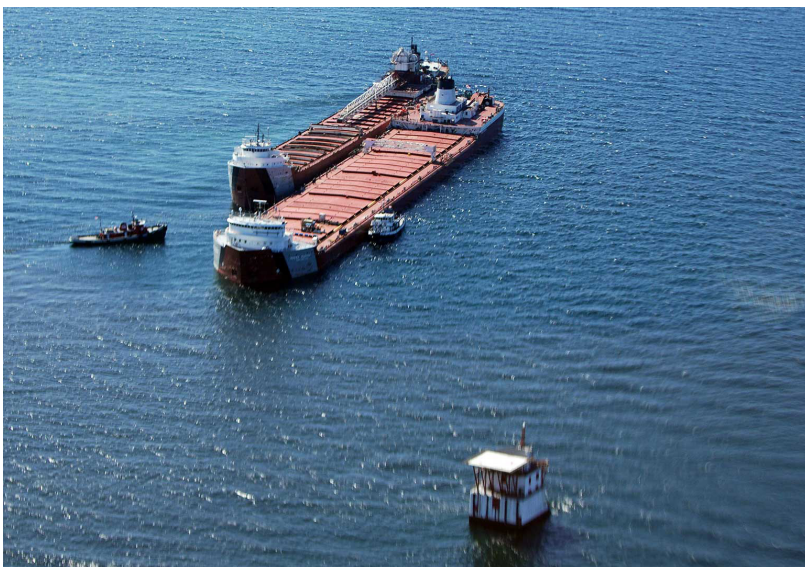


P//C Bob Buchanan, P



Carlyle Grill

P/C Bob Buchanan, P will describe the grounding of the *Roger Blough* and the *Calumet* near Sault Ste Marie.



The *Roger Blough*, grounded near the Gros Reef Light, is being unloaded into the *Phillip R. Clark*



Administrative Officers' Message Lt/C Jeanine and Bob Buchanan, P



The September squadron program's title is "Missed the Turn."

First, in May, 2016, Great Lakes Fleet's (Canadian National) *Roger Blough* ran aground off of Gros Cap Light in Lake Superior Whitefish Bay at the entrance to the Upper St. Mary's River. This event was subsequently described to the squadron in a presentation which included location, attempts to pull the *Blough* free, then the lightering process that became necessary. Why the *Blough* grounded in clear weather early in the afternoon remained a mystery.

Then, about 6 weeks later, the National Transportation Safety Board (NTSB) issued their final report of the *Blough's* grounding. This report has been obtained and copies will be provided at our squadron meeting for discussion. A complete description of events on the bridge is contained in this report. The Automatic Identification System (AIS) track will be examined, then we will take a "tour of the bridge" for a detailed description of exactly what happened. The Coast Guard report is not yet available.

But the groundings continued! About 2 months ago, Lower Lakes Transportation's *Calumet* ran aground just off of Mission Point in the lower St. Mary's River. This event completely stopped commercial shipping in the river system. The *Calumet* is one of 3 river class boats, the former David Z. Norton once owned by Ogleby-Norton, a division of the Columbia Transportation Co. Here the situation was quite different from the *Blough's* grounding. The *Calumet* was empty or in ballast so that lightering would not be effective. We will look at the exact location, then show how the *Calumet* was freed. Had it not been freed to open the St. Mary's River, this grounding could have had a major economic impact because grain, taconite, and coal shipments were stopped during the grounding.

Our Commander Ron has added digital charts to help provide exact information about this event.



Calumet grounded at Mission Point in Sault Ste. Marie



Commander's Message

Cdr. Ron Schwartz, SN



On Friday, August 25, four of us -- Randy Baier, Peggy Moller, Freddy Ohou, and I -- went to the Pinckney Recreation Area and launched my canoe and kayak into Halfmoon Lake. Peggy, Randy and Freddy got into the canoe, with Randy sitting on a boat cushion on the bottom center of the canoe, with another cushion as a back rest. Peggy and Freddy paddled the canoe to the imaginary beat of jungle drums in Freddy's mind. The canoe was heavily loaded but they managed to keep it on an even keel.

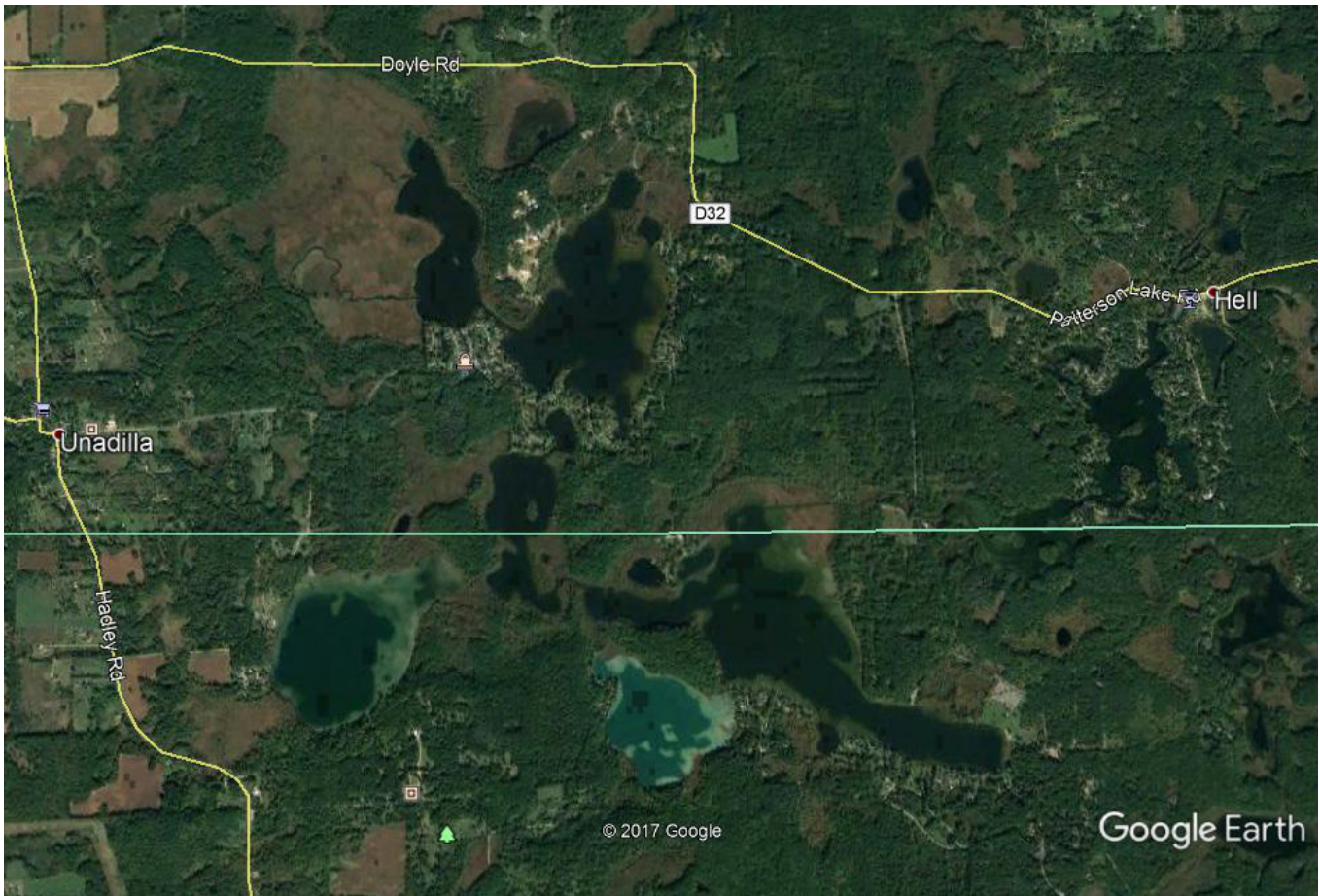
I was on the slowest boat -- my kayak -- and made it slower by stopping my paddling to take pictures (see below). We all stopped at a shallow spot just before entering Watson Lake to rearrange paddlers. Peggy took the kayak, I got the king's seat in the center of the canoe, Randy took the canoe aft paddler's seat and Freddy stayed in the canoe front paddler's seat. The scenery was great -- a castle, water flowers, clear water, a Blue Heron, Sea Gull, a bridge over the channel for the Potawatomi hiking/biking trail, and a few fish. At the north end of Watson Lake we saw the sail boat that a friend of mine built a few years ago and keeps on a boat lift at his daughter's cottage.

The water level is kept constant by a dam in Hell, Michigan down stream from Halfmoon Lake. This Chain of Lakes between Unadilla and Hell Michigan in the Pinckney Recreation Area are spring fed and clean -- not muddied up by farm run off or dredging. The waters go over a dam in Hell, Michigan and feed Portage Lake and the Huron River. It was a delightful trip.

After 3 hours of paddling we got back to the launch site and Peggy presented us with her excellent culinary delights -- ham sandwiches with horseradish spread, delicious homemade brownies loaded with walnuts, and drinks.



Peggy, Randy, and Freddy in the canoe



Chain of Lakes between Unadilla and Hell, Michigan in the Pinckney Recreation Area are spring fed and clean -- not muddied up by farm run off and dredging. The waters go over a dam in Hell, Michigan and feed Portage Lake and the Huron River.



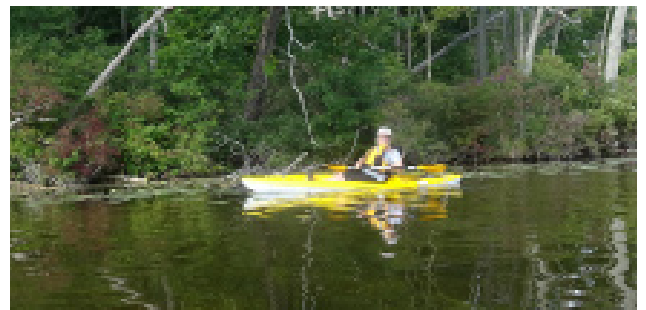
Castle being built on Halfmoon Lake

The bridge in the center over the channel is on the Potawatomi biking/hiking trail.





Freddy Ohou in the kayak



Peggy Moller in the Kayak



Scene along the shore

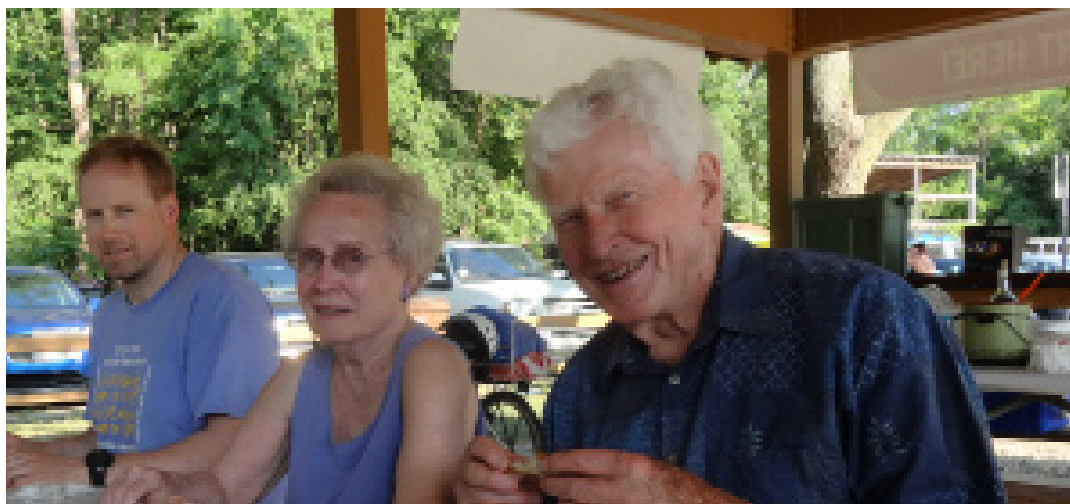


Channel between Watson and Patterson Lakes



Channel going west from Halfmoon Lake to Blind Lake, Bruin Lake, Watson Lake, Patterson Lake, and Woodburn Lake

AASPS 12 June 2017 Picnic Pictures



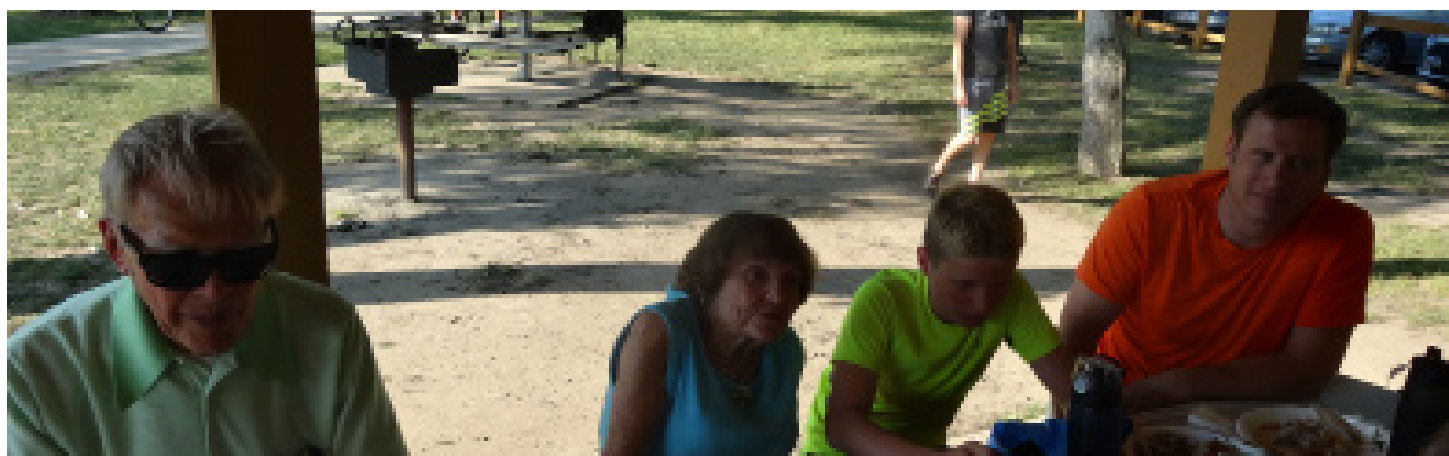
John Barr Jr., Marlene Barr, Bob Buchanan



Freddy Ohou and Sharon Pinsak



Peggy Moller and Ron Schwartz



Art Pinsak

Jeannine Buchanan

Alexander and Karl Barr

On Saturday, July 29, 2017 8:53 AM, Peter Jones <petejones46@yahoo.com> wrote:

New Canadian Customs Reporting Requirements

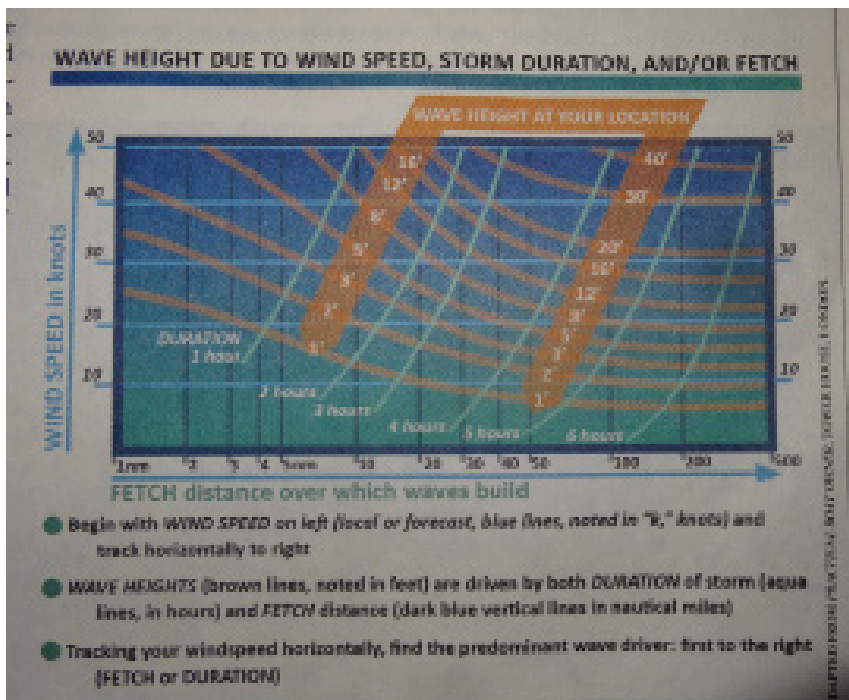
A new Canadian border enforcement law now allows that American private boaters are not required to report to Canadian Customs provided their boat did not land, anchor, moor or make contact with another vessel while in Canadian waters. However, the new law provides Canadian Customs officers with the discretionary power to compel suspicious boaters to report in order to protect border security.

This new border enforcement law stemming from a Bill S-233 was signed into law by Governor General David Johnston on June 19, 2017. It was drafted by Canadian Senator Bob Runciman and the House version was authored by House of Commons member Gordon Brown. The bill amends the Customs Act and the Immigration and Refugee Protection Act. The old reporting requirements were overly rigid, they were out of step with those facing Americans who enter Canadian waters, and they were hurting the economy of tourism-dependent border regions. Also, the old requirements didn't do anything to enhance border security.

Canadian Customs and law enforcement officials should be aware of this new law's requirements as it was published on the "Canada Border Services Agency" website June 29, 2017. The reference web page is: <http://www.cbsa-asfc.gc.ca/travel-voyage/pb-pp-eng.html> . Note that the web page has a lot of good information on it which is worth reviewing.

You do not have to be concerned about the imaginary border line in the "Great Lakes" and their rivers anymore.

Commander Peter Jones, SN Sarnia Power and Sail Squadron
P/Lt/C Peter Jones, SN-CN
Port Huron Sail and Power Squadron



Wave Height vs fetch and wind speed

Wave heights are plotted with the wind speed, fetch and time for waves to build up. This graph came from Wood Boat Magazine for Sept. Oct. 2017. Example : for a fetch of 50 miles and wind speed of 10 knots the waves will be about 1.7' high after 5 hours.

Boating Education

The August Basic Boating Course was cancelled -- only one student will take the on-line ABC class.

Cruise Planning Course. I would like to take the USPS Cruise Planning course. If you want that course also, call me at 734-769-3476. We will meet in my dining room, or yours, and have Snacks and Cruising Planning and take turns giving the lectures. We will meet on Sunday or Monday nights -- whichever is most convenient that week, and use digital charts and Google Earth pictures to view each weeks table top cruise location. Cost is \$45 for members for the USPS text book. Ron.

A Partial List of Events

DATE	SPONSOR	EVENT AND LOCATION
Sept. 18	AASPS	General Meeting at Carlyle Grill 6 PM. see page 3
Oct. 16	AASPS	Meeting cancelled. Too many members are out of town.
Oct. 13-15	D9	D9 Conference. See page 11 and 12

Supplemental Information

White water has lots of air in it and will not support you .

Flat bottom boats (or nearly flat) are dangerous. When they heel over they can tip completely over. Deep V, round, or wineglass shaped and ballasted boat hulls can heel over and not tip completely over unless a large wave causes them to roll over.

Lightning can blast a hole in the bottom of a boat.

Gasoline or Propane fumes will go to the bilge inside a boat and suffocate people or be a fire hazard.

Water weighs about 63 pounds per cubic foot, and when moving – such as in a river – can exert a tremendous force on a body or boat.

Boat Launch sites in Michigan can be found at <http://www.mcgi.state.mi.us/mrbis/mapbasic.aspx>
This is a great site -- map of Michigan with a green star at each launch site. You can zoom in on the site. Then locate it on Google Earth to see details – parking lot size, etc.

Charts of inland lakes in Michigan can be found at
http://www.michigan.gov/dnr/0,4570,7-153-10364_52261-67498--,00.html

This lists lakes in each county. Click on the county. Click on the lake name. Zoom in or out by holding down the ctrl key and clicking the + or – key. Or move the cursor to the bottom center and a tool bar will appear with zoom tools and print tools. The charts show depths, bottom characteristics, launch sites, shore features, picnic areas, camping areas, etc. Use scroll bars on the right side and bottom to move the chart.



2017 D/9 FALL CONFERENCE REGISTRATION FORM



D9 Fall Color Tour

13 – 15 October 2017

Treetops Resort (Treetops.com) , 3962 Wilkerson Rd, Gaylord MI 49735

Hospitality Room Theme: "The Wizard of Oz"

Uniform of the Day: Seminars & Business Lunch: Uniform F (or USPS Blazer or appropriate attire)

Dinner: Dressy Casual [i.e. Blue blazers & polo shirts for men, dressy casual for women]

<u>Rank</u>	<u>Last Name</u>	<u>First Name</u>	<u>Grade</u>	<u>Certificate #</u>	<u>Squadron</u>	<u>First Time Attendee?</u>
(1) _____	_____	_____	_____	_____	_____	<u>Yes</u> <input type="checkbox"/>
(2) _____	_____	_____	_____	_____	_____	<input type="checkbox"/>

Phone: _____ E-Mail: _____

MEALS ☐ No meals, Friday hospitality registration only

NOTE: Reservations for meals **MUST** be received by 06 October 2017. Any meal registrations received after this date will not be honored and your check will be returned.

Lunch _____ @ \$19.00 = \$ _____

Choice: _____ Stacked Roast Beef Sub
 _____ Michigan Woods Salad w/Chicken
 _____ Special Meal/Dietary Requests _____

Dinner _____ @ \$44.00 = \$ _____

Dinner includes entertainment.

Choice: _____ Bourbon Glazed Pork Loin
 _____ Treetops Chicken Piccata
 _____ Sweet Chili Spiced Salmon
 _____ Special Meal/Dietary Requests _____

Total Amount Enclosed = \$ _____ Check # _____

Make checks payable to: **USPS District 9**

Mail checks and this form to:

Dave Dudek
 35801 Schmid Dr
 New Baltimore, MI 48047

Questions:

Fred Hoitash, cfdist@comcast.net (734) 649-1335 or

Mike Rachuk, mike.rachuk@gmail.com (586) 876-5818

See next page for hotel reservation information

Notes !

- An email confirmation will be sent to the email address provided. If you do not receive a confirmation after 5 days, please contact Mike Rachuk (586-876-5818)
- **HOSPITALITY ROOM WRIST BANDS:** Wrist bands will be distributed at the registration table for security reasons during the Friday night hospitality tour. Check above for no meals if applicable.

HOSPITALITY ROOM RESERVATIONS: All hospitality rooms must be reserved through District 9. Contact Mike Rachuk at mike.rachuk@gmail.com or 586-876-5818. Hospitality rooms are all in the lodge and are \$135/night plus a one-time furniture removal fee of \$30. Each room will have the bed removed and 2 tables and 5 chairs will be provided. Cut off date for hospitality rooms is 13 Sep 2017.

ROOM RESERVATIONS - MUST RESERVE NO LATER THAN 15 SEP 2017

Contact Treetops group reservations line at 855-261-8764. It is important for you to call rather than to book online in order to receive the discounted rate. Call Code: USPS District 9 Conference 2017

Inn standard \$75 (3 to 4 people max), plus tax and resort fees

Inn Deluxe \$95 (4 people max), plus tax and resort fees

Lodge Queen \$135 (4 people max), plus tax and resort fees

Lodge King \$135 (2 people max), plus tax and resort fees

Inn rooms are standard size rooms. Lodge rooms are large well appointed rooms living area and kitchen. See pictures.



Lodge King Room



Lodge Queen Room



Inn Standard Room

